



# PRE-DEPARTURE GUIDE FOR INTERNATIONAL STUDENTS

1. About Singapore
2. Entry into Singapore
3. Accommodation Services
4. Transport
5. Mobile Phone Usage
6. Banking Services
7. Currency
8. Food Options
9. Emergency Numbers
10. Language
11. Smoking
12. Safe Drinking Water
13. Shopping
14. Taxes & Tipping
15. Travel Insurance
16. Weather
17. Kaplan Contacts
18. Pre-Departure Checklist

## 1. ABOUT SINGAPORE



Population of  
**5.5**  
million people

**4 million**  
are citizens and PRs

**1.5 million**  
are foreigners working,  
studying or living in Singapore

People of different races and religions can live, work and study in a harmonious and inclusive society.

### Ethnic Groups

- Chinese (75.9%), Malay (15.1%), Indian (7.4%) and Others (1.6%).

### Religions

- Buddhism, Christianity, Hinduism, Islam and Taoism.
- Other religions are also freely practised

### Official Languages

- English is the most widely used language and the language of commerce
- Other spoken languages include Mandarin, Malay, Tamil and local dialects.

### Cultural Diversity

Singapore boasts a rich multicultural heritage made up of various ethnic groups, including the Chinese, Eurasians, Indians and Malays. International students have the opportunity to experience this diversity and unity for themselves, and discover the vibrancy of unique ethnic districts such as Chinatown, Kampong Glam and Little India.

Source: Strategy Group, Report in Brief 2021 | [www.strategygroup.gov.sg/files/media-centre/publications/Population-in-brief-2021.pdf](http://www.strategygroup.gov.sg/files/media-centre/publications/Population-in-brief-2021.pdf)

### Why is Singapore the best place to live and work?

- 2<sup>nd</sup> in the world for attracting and developing talent<sup>1</sup>
- 3<sup>rd</sup> safest in the world<sup>2</sup>
- 3<sup>rd</sup> in World's Competitiveness<sup>3</sup>

<sup>1</sup>INSEAD, "The World's Most Talent Competitive Countries", 2021 | <https://knowledge.insead.edu/career/the-worlds-most-talent-competitive-countries-2021-17526>

<sup>2</sup>The Economist Intelligence Unit, Safe Cities Index 2021 | <https://safecities.economist.com>

<sup>3</sup>International Institute for Management Development (IMD), World Competitiveness Ranking Report 2022 | [www.imd.org/centers/world-competitiveness-center/rankings/world-competitiveness/](http://www.imd.org/centers/world-competitiveness-center/rankings/world-competitiveness/)



## 2. ENTRY INTO SINGAPORE

For entry into Singapore, you will need to have these items ready:

- A passport that is valid for at least six months<sup>1</sup>
- Sufficient funds for the length of your intended stay
- A submitted SG Arrival Card<sup>2</sup>
- A valid Singapore entry visa (where applicable)
- A confirmed onward or return ticket (where applicable)
- Evidence that you can enter your next destination (for example, a visa)
- A Yellow Fever Vaccination Certificate, if applicable
- Proof of Vaccination with COVID-19 WHO EUL Vaccines



Students will need to follow the latest travel requirements. For more details, please refer to the website of the Immigration & Checkpoints Authority of Singapore at [www.ica.gov.sg/enter-transit-depart/entering-singapore](http://www.ica.gov.sg/enter-transit-depart/entering-singapore)

If your Student's Pass had been approved prior to your arrival, please bring along the In-Principle Approval Letter (IPA Letter) that was emailed to you or your agent. Please ensure you have a return ticket (can be open-dated) as you may encounter problems entering Singapore with a single-journey air ticket.

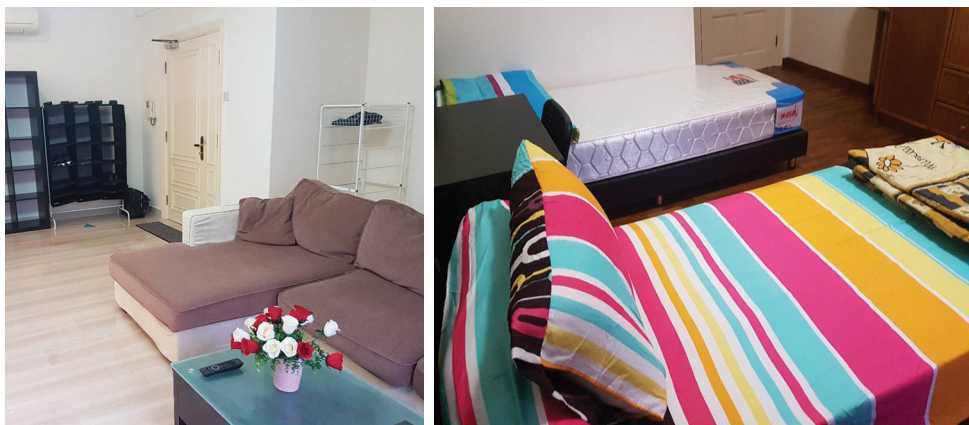
Under Singapore laws, certain types of items are subject to the payment of duty before they can be brought into the country. There are also items which are prohibited from being brought into Singapore.

For more details, please refer to [www.ica.gov.sg/enter-transit-depart/entering-singapore/what-you-can-bring](http://www.ica.gov.sg/enter-transit-depart/entering-singapore/what-you-can-bring)

<sup>1</sup>Every traveller is required to hold their own individual passport, regardless of age.

<sup>2</sup>The SG Arrival Card is the electronic version of the paper disembarkation/embarkation (DE) card (or commonly known as the white card) that foreign visitors are required to submit on arrival. From 27 March 2020, ICA will discontinue the use of paper DE card and all travellers will have to provide their arrival information via the "SG Arrival Card" e-Service instead.

## 3. ACCOMMODATION SERVICES



We believe that providing a conducive and nurturing living environment is essential to every international student's academic journey with us. As a Kaplan student, you will enjoy special rates through our Kaplan-approved accommodation partners.

For more details, please refer to [www.kaplan.com.sg/living-studying-singapore](http://www.kaplan.com.sg/living-studying-singapore).

Students need to apply for their accommodation prior to arrival. Please check with your agents for the details.

Anthony's Homestay	Accommodation Fee (Monthly)	Application Fee (One-Time)	Deposit Fee (Refundable)
Includes utilities, guardianship services (non-legal), airport pick-up, room cleaning and laundry			
Twin Sharing Room	S\$650	-	S\$650

Remarks: Minimum 4-month contract with 1-month refundable deposit. Fees indicated are on per person basis.

ES Home	Accommodation Fee (Monthly)	Application Fee (One-Time)	Deposit Fee (Refundable)	Miscellaneous Fee (Access Card)
Full Board (Includes utilities, guardianship services (non-legal), airport pick-up and meals)				
Single Room	S\$2,150	S\$200	S\$2,150	S\$100
Twin Sharing Room	S\$1,650 - S\$1,750	S\$200	S\$1,650 - S\$1,750	S\$100

Remarks: Minimum 6-month contract with 1-month refundable deposit. Fees indicated are on per person basis.

Information is correct at time of publication in September 2022. Fees are subject to revision.

Eton Hall @ 68 Wilkie Road	6 Months/Per Pax (Monthly)	12 Months/Per Pax (Monthly)
Excludes utilities and guardianship services (non-legal)		
Master Bed Room Single Stay (Bathroom Attached)	S\$2,550	S\$2,350
Master Bed Room Twin Sharing (Bathroom Attached)	S\$1,350	S\$1,200
Standard Single	S\$1,750	S\$1,650
Standard Double	S\$1,030	S\$930
ECON Room	S\$1,200	S\$1,100

Remarks: Fees indicated are on per person basis.

EVO House @ River Valley	Accommodation Fee (Monthly)	Administrative Fee (One-Time)	Deposit Fee (Refundable)
Excludes utilities and guardianship services (non-legal)			
Twin Sharing Common Room	S\$1,100	S\$250	S\$1,100
Twin Sharing Master Room	S\$1,350	S\$250	S\$1,350
Single Common Room	S\$1,950	S\$250	S\$1,950
Single Master Room	S\$2,450	S\$250	S\$2,450

Remarks: Minimum 6-month contract with 2-month refundable deposit. Fees indicated are on per person basis.

Paya Lebar Residence	Accommodation Fee (Monthly)	Application Fee (One-Time)	Deposit Fee (Refundable)
Includes utilities, guardianship services (non-legal), airport pick-up and meals			
Single Room (Private Bathroom)	S\$2,600 (6 months)	S\$200	S\$2,600
	S\$2,500 (12 months)	S\$200	S\$2,500
Twin Sharing Room (Private Bathroom)	S\$2,100 (6 months)	S\$200	S\$2,100
	S\$2,000 (12 months)	S\$200	S\$2,000
Twin Sharing Room (Public Bathroom)	S\$1,900 (6 months)	S\$200	S\$1,900
	S\$1,780 (12 months)	S\$200	S\$1,780

Remarks: Minimum 6-month or 12-month contract with 1-month refundable deposit. Fees indicated are on per person basis.

We provide  
**free airport pick-up**  
for all new students  
arriving in Singapore.  
For more details, visit  
[kaplan.com.sg/arrival-services](http://kaplan.com.sg/arrival-services)  
or contact your agent.



### 4. TRANSPORT

Singapore's efficient network of public transportation ensures you can travel comfortably and affordably to any part of the island by bus, taxi or train.



**BUS:** Singapore's bus system network has routes covering most places in Singapore.

Taking a bus is an affordable way to travel around. You can also enjoy the beautiful architecture of our 'city in a garden' while in the comfort of the air-conditioned buses.

You can pay for your bus fare using an Adult Stored Value Travel Card (EZ-Link/NETS/FlashPay). Look out for the electronic card reader—located next to the bus driver—and tap as you board. Remember to tap your card again, on the reader located at the rear exit, when you alight. You can also pay with contactless bank cards and mobile wallets. If you choose to pay in cash, please ensure you have the exact amount in change.

There are also late-night bus services such as the Nite Owl and NightRider which operate one way, from the city to major residential estates. They operate from about midnight to 2am on Fridays, Saturdays and eves of public holidays.



**TAXI OR PRIVATE HIRE CAR:** Taxis and private hire cars (PHCs) can be booked through mobile apps. Taxis can also be hailed at taxi stands. Taxi metered fares are calculated based on distance and surcharges may apply. For ride-hail trips, operators offer metered fare trips on taxis while operators set flat fares on taxis and PHCs for booked rides.

You can call the taxi operators directly or use their apps:  
**ComfortDelGro Taxi: +65 6552 1111**  
**Premier Taxis: +65 6363 6888**  
**Prime Taxi: +65 6778 0808**  
**Strides Taxi: +65 6555 8888**  
**Trans-Cab: +65 6555 3333**

Booking fees may apply depending on the operator and the time of booking.

You may also book a taxi or a PHC via the following operators:  
**Gojek: [www.gojek.com/sg](http://www.gojek.com/sg)**  
**Grab: [www.grab.com/sg](http://www.grab.com/sg)**  
**Ryde: [www.rydesharing.com](http://www.rydesharing.com)**  
**TADA: [www.tada.global](http://www.tada.global)**



**TRAIN:** The Mass Rapid Transit (MRT) system in Singapore is an air-conditioned and modern passenger train service with stations across the island. The MRT network of trains serves business, shopping and most residential areas.

The frequency of the trains is about 2 to 3 minutes during the peak hours (7am to 9am) and about 5 to 7 minutes during off-peak times. The trains operate daily from 5.30am to around midnight. Today, more than 130 stations across six MRT lines span the island and there are more than 40 stations across two Light Rapid Transit (LRT) lines.

You will need an Adult Stored Value Travel Card (EZ-Link/NETS/FlashPay): These cost S\$10, which includes a stored value of S\$5 for your commutes. To purchase or top up the value of your card, you can do so at any TransitLink Ticket Office or convenience stores. You can also pay with contactless bank cards and mobile wallets.

For more details, please refer to:  
[www.visitsingapore.com/travel-guide-tips/getting-around](http://www.visitsingapore.com/travel-guide-tips/getting-around)  
[www.lta.gov.sg/content/ltagov/en/getting\\_around.html](http://www.lta.gov.sg/content/ltagov/en/getting_around.html)

## 5. MOBILE PHONE USAGE



Singapore's international dialling code is +65. However, you do not need to dial +65 while in Singapore if you have international roaming service on your mobile phone, as it will automatically connect you to the local number here. You can also purchase a SIM card upon arriving in Singapore.

## 6. BANKING SERVICES



There are local and foreign banks in Singapore including BNP Paribas, Citibank, DBS, HSBC, Maybank, OCBC, Standard Chartered and UOB. You can set up an account with these banks to enjoy services such as making digital payments and withdrawing cash from automated teller machines (ATMs).

## 7. CURRENCY



In Singapore, we use the Singapore dollar (S\$). You can find money changing services not only at the Singapore Changi Airport but also at most shopping centres. You can also access the ATMs to withdraw cash using your ATM/Debit/Credit Card.

## 8. FOOD OPTIONS



From Michelin-star treats and scrumptious gourmet cuisines to delectable hawker food, Singapore has a wide range of delicacies for you to indulge in. For more details, please refer to [www.visitsingapore.com/dining-drinks-singapore](http://www.visitsingapore.com/dining-drinks-singapore)

## 9. EMERGENCY NUMBERS



- Police Emergency: 999
- Ambulance & Fire Engine: 995

## 10. LANGUAGE



English is the most widely used language in Singapore. Other languages used include Mandarin, Malay, Tamil and other dialects.

## 11. SMOKING



Smoking under the age of 21 is an offence in Singapore.

Smoking is an offence in places such as shopping centres, restaurants, cinemas, public transports and lifts.

For more details, please refer to [www.nea.gov.sg/our-services/smoking-prohibition/overview](http://www.nea.gov.sg/our-services/smoking-prohibition/overview)

## 12. SAFE DRINKING WATER



You can drink water straight from the tap as the water in Singapore passes World Health Organization (WHO) standards. You can also buy bottled water easily from convenience stores.

## 13. SHOPPING



Elevate your retail therapy experience by voyaging through the stunning infrastructure of Singapore's shopping malls.

For more details, please refer to [www.visitsingapore.com/singapore-shopping](http://www.visitsingapore.com/singapore-shopping)

## 14. TAXES & TIPPING



The prevailing Good and Services Tax (GST) rate until 31 Dec 2022 is 7%. With immediate effect from 1 Jan 2023, the GST rate will increase to 8%; and from 1 Jan 2024, the GST rate will increase to 9%. For more information, please refer to the Inland Revenue Authority of Singapore (IRAS) website: [https://www.iras.gov.sg/taxes/goods-services-tax-\(gst\)/gst-rate-change/gst-rate-change-for-consumers1](https://www.iras.gov.sg/taxes/goods-services-tax-(gst)/gst-rate-change/gst-rate-change-for-consumers1)

Tipping is not a custom in Singapore as a service charge of 10% is generally already added to the bill in food establishments. However, you may give an optional tip to the hotel porters or waiters in restaurants if you experience good service.

## 15. TRAVEL INSURANCE



Your medical insurance will take effect only from the day of programme commencement. Therefore, students are encouraged to purchase personal travel insurance to ensure personal coverage for medical, hospitalisation and other unforeseen circumstances during their trip to Singapore and before the medical insurance takes effect.

## 16. WEATHER



Singapore is an equatorial country which experiences warm weather and rain all year round. The average daily temperature is about 31-33°C during the day and 23-25°C during the night. This is good news as you can wear light clothing and enjoy outdoor activities throughout the year. You may want to consider bringing along an umbrella when you head out.

For more details, please refer to [www.visitsingapore.com/travel-guide-tips](http://www.visitsingapore.com/travel-guide-tips)

## 17. KAPLAN CONTACTS

For further enquiries, you can email: [apply.sg@kaplan.com](mailto:apply.sg@kaplan.com) or call your respective Country/Regional Manager:

### Countries/Regions

#### Cambodia, Central Asia, India & Sub-Continents, Myanmar & Russia

Desmond Hong +65 6411 4560  
[desmond.hong@kaplan.com](mailto:desmond.hong@kaplan.com)

#### China

Chang Wei Shan +65 6411 4599  
[weishan.chang@kaplan.com](mailto:weishan.chang@kaplan.com)

#### Indonesia, Laos, Malaysia & Thailand

Joshua Teo +65 6309 5817  
[joshua.teo@kaplan.com](mailto:joshua.teo@kaplan.com)

#### Laos, Malaysia & Thailand (Based in Malaysia)

Ivanna Ting +60 16 777 9280  
[ivanna.ting@kaplan.com](mailto:ivanna.ting@kaplan.com)

#### Based in Indonesia

Livia Garnadi +62 811 999 1511  
[livia.garnadi@kaplan.com](mailto:livia.garnadi@kaplan.com)

William Wijaya +62 822 2670 1808  
[william.wijaya@kaplan.com](mailto:william.wijaya@kaplan.com)

#### Japan, Korea, Mongolia, Philippines & Taiwan

June Luo +65 6496 5681  
[june.luo@kaplan.com](mailto:june.luo@kaplan.com)

#### Based in Korea

Claire Kim +82 10 6690 9922  
[claire.kim@kaplan.com](mailto:claire.kim@kaplan.com)

**Kaplan City Campus @ Wilkie Edge** 8 Wilkie Road, Level 2, Singapore 228095  
**Kaplan City Campus @ GR.ID** 1 Selegie Road, Level 9, Singapore 188306

+65 8613 8989 [enquiry.sg@kaplan.com](mailto:enquiry.sg@kaplan.com)

[f](#) [in](#) [in](#) [in](#) [in](#) [in](#) [in](#) KaplanSingapore [kaplan.com.sg](http://kaplan.com.sg)

#### Vietnam

Rodney Vu +65 6309 5816  
[rodney.vu@kaplan.com](mailto:rodney.vu@kaplan.com)

#### Based in Ho Chi Minh City, Vietnam

Nguyen Ngoc Xuan Vinh (Annie)  
 +84 9028 12394  
[xuanvinh.nguyen@kaplan.com](mailto:xuanvinh.nguyen@kaplan.com)

#### Based in Hanoi, Vietnam

Hoai Phuong Nguyen (Katherine)  
 +84 9645 42230  
[hoaiphuong.nguyen@kaplan.com](mailto:hoaiphuong.nguyen@kaplan.com)

#### Local Transfer Students (Holding a Student's Pass, Dependant's Pass, Long-Term Visit Pass or Diplomatic Pass in Singapore)

Rodney Vu +65 6309 5816  
[rodney.vu@kaplan.com](mailto:rodney.vu@kaplan.com)

Chang Wei Shan +65 6411 4599  
[weishan.chang@kaplan.com](mailto:weishan.chang@kaplan.com)

#### Other Countries/Regions

Rodney Vu +65 6309 5816  
[rodney.vu@kaplan.com](mailto:rodney.vu@kaplan.com)

## 18. PRE-DEPARTURE CHECKLIST



You may wish to use the following checklist to ensure you have all required documents ready prior to arrival in Singapore.

### GENERAL

- Return Air Ticket
- Entry Visa
- Copy of IPA Letter (if available)
- Address of Accommodation in Singapore (not a hotel)

### REQUIRED FOR REPORTING DAY

- Original Passport and Arrival Card
- Previous Student's Pass (if you studied at another school or programme at Kaplan)
- Letter of Offer (Digital)
- Signed Student Contracts & Advisory Notes (Digital)
- Programme Fee Payment (if you have not made them prior to arrival) – cash, bank draft or cheque (Singapore bank only)
- Cash of minimum S\$50 (for medical checkup and photo-taking for Passport)
- All original documents for sighting process and verification purpose

**We look forward to welcoming you to Kaplan in Singapore!**

The information contained in this brochure is correct at time of publication (September 2022).  
 Kaplan Higher Education Academy UEN 199409389H; Validity 20/5/2022 – 19/5/2026.